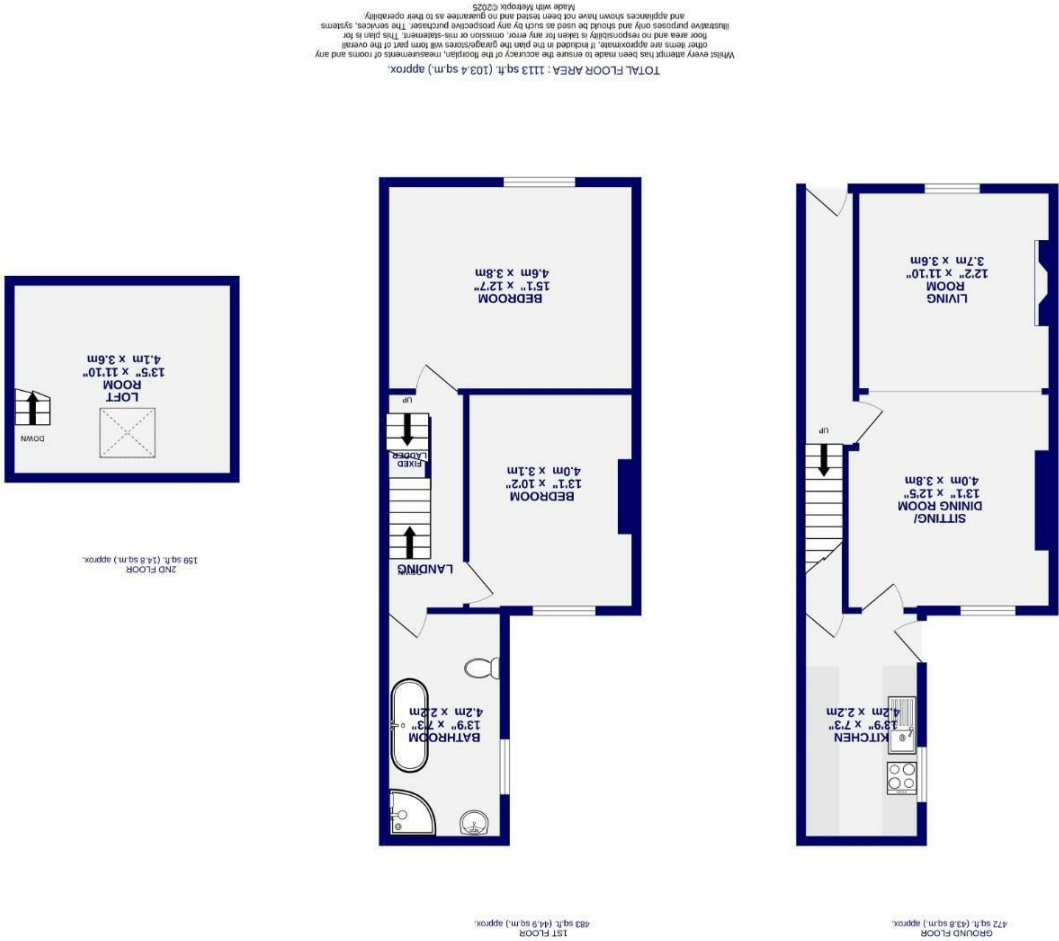


These particulars have been prepared as accurately and as reliably as possible, but should not be relied upon as 'statement of fact'. If there is any point which is of particular importance to you, please contact the office and we would be pleased to check the information. We have not tested any services, appliances, equipment or facilities and nothing in these particulars should be deemed to be a statement that they are in good working order, or that the property is in good structural condition or otherwise. Any areas, measurements, floor plans or distances referred to are given as a guide only and are not precise. Purchasers must satisfy themselves by inspection or by otherwise regarding the items mentioned above and as to the correctness of each of the statements contained in these particulars. No person in the employment of Ashtons has any authority to make or give any representation or warranty whatsoever in relation to this property or these particulars nor enter into any contract relating to the property on behalf of the vendor.

- EPC - D
 - No Onward Chain
 - South Facing Rear Aspect
 - Enclosed Courtyard
 - Sought After Residential Area
 - First Floor Bathroom
 - Two Double Bedrooms
 - Period Victorian Terrace
- Freehold
Council Tax Band - C

Alma Terrace Fishergate, York YO10 4DL



Alma Terrace

Fishergate, York

YO10 4DL

Offers Over £380,000

 2  1

Set on the sought after Alma Terrace, just off Fulford Road in the popular Fishergate area, this charming mid terrace home offers generous living space and is perfectly placed for scenic riverside walks into York city centre. Sympathetically updated for modern living while retaining beautiful period features, the property is offered with no onward chain.

A pretty planted forecourt leads into a welcoming hallway with stairs to the first floor and access to the open plan living and dining room. With windows to both the front and rear, this light filled space is ideal for everyday living and entertaining. The living area features a log burning stove set within a characterful fire alcove with a beam over, while the dining area provides ample room for a family table. From here, the galley style kitchen is fitted with a range of units, integrated gas oven and hob, and space for appliances, along with a breakfast bar and useful under-stairs storage. Beyond the kitchen, an outbuilding is currently used as a workshop offers versatility and is built to building regulations, making it ideal for conversion into additional living space if desired.

Upstairs, the spacious master bedroom enjoys a feature Victorian fireplace, complemented by a second double bedroom and a stylish bathroom with a roll-top bath and separate shower. A timber ladder leads from the landing to a useful loft room, providing extra storage or hobby space.

Outside, the rear courtyard is perfect for alfresco dining, with gated access to the rear service lane and a further gate to the front. On street permit parking is available.

